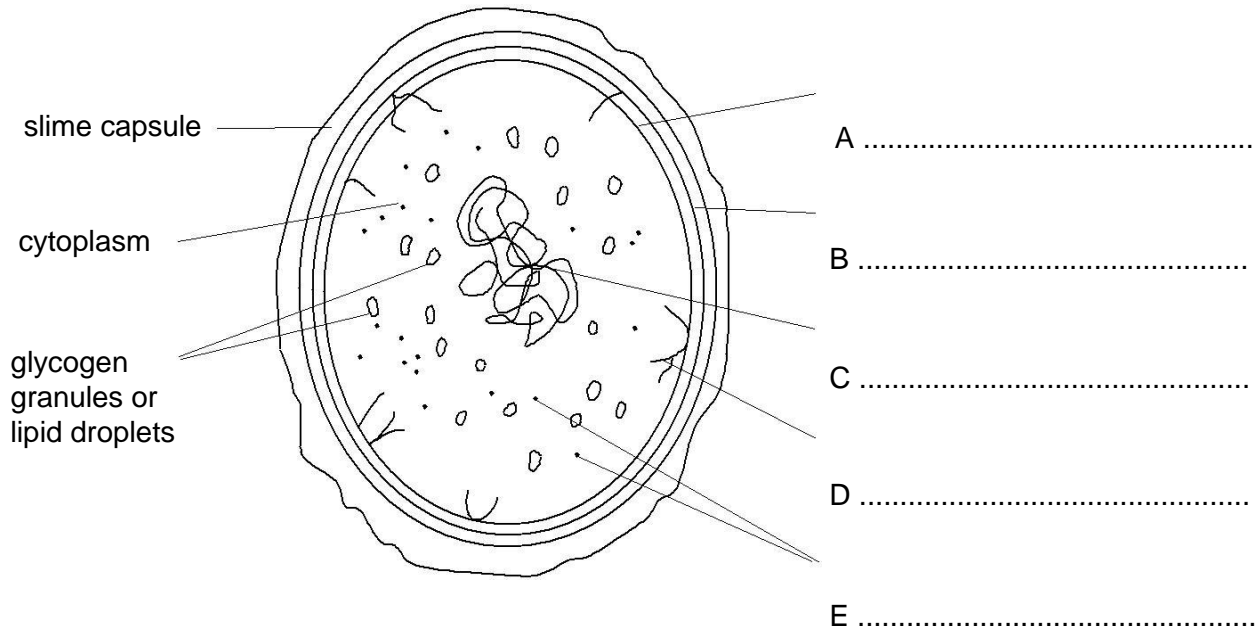


The drawing below shows the ultrastructure of *E. coli*.



(a) (i) Label structures A to E on the drawing.

(ii) State a function of part D.

.....  
[1]

(iii) What term is given to this bacterial shape?

.....  
[1]

(b) List three ways in which prokaryotic cells differ from eukaryotic cells.

- 1.....
- 2.....
- 3.....

(ii) State a function of part D.

.....

.

[1]

(iii) What term is given to this bacterial shape?

.....

.

[1]

(b) List three ways in which prokaryotic cells differ from eukaryotic cells.

1

.....

2

.....

3

.....